



Crisis Management Center North Macedonia

NEXT GENERATION INCIDENT COMMAND SYSTEM

**NICS
USER GUIDE**

NICS NMK

**NATO EADRCC
Excercise 2021
North Macedonia**



Introduction to NICS

Next Generation Incident Command System (NICS) is a web-based command and control environment for small to large to extreme scale incidents that facilitates collaboration across federal, tribal, military, state, county, and local/municipal levels of preparedness, planning, response, and recovery for all-risk/all-hazard events. NICS facilitates situational awareness for widely dispersed responders.

NICS provides collaboration and communication capabilities across all echelons of responders; it enhances the quality and accessibility of sensor data; and it integrates location data for resources, vehicles, and personnel. During an incident, NICS provides an information backbone that manages and distributes data, including real-time vehicle location feeds, weather, critical infrastructure, and terrain information.

Incident data is displayed by using a web-based, open standards platform that allows users with the proper permissions to log into a map-based environment accessible via an ordinary web browser and Internet connection. NICS offers graphical tools, including geo-referenced virtual whiteboards, for dynamic interagency collaboration that facilitates a coordinated response.

Using these tools, responders are able to quickly form teams, send messages to one another, and remotely share maps and drawings that enhance the management of the incident.

NICS supports the following features:

- The ability to organize and share whiteboard rooms
- The ability to communicate and document information using text-based chatting (public and private)
- Multiple base map layers including streets, topographical, satellite, and aeronautical
- A well-organized data warehouse
- Automatic Vehicle Location (AVL)
- Position Location Information (PLI) GPS-based personnel tracking
- Automated Aircraft Flight Following (AFF)
- Robust real-time weather feeds
- Form and reports



SECTION 1

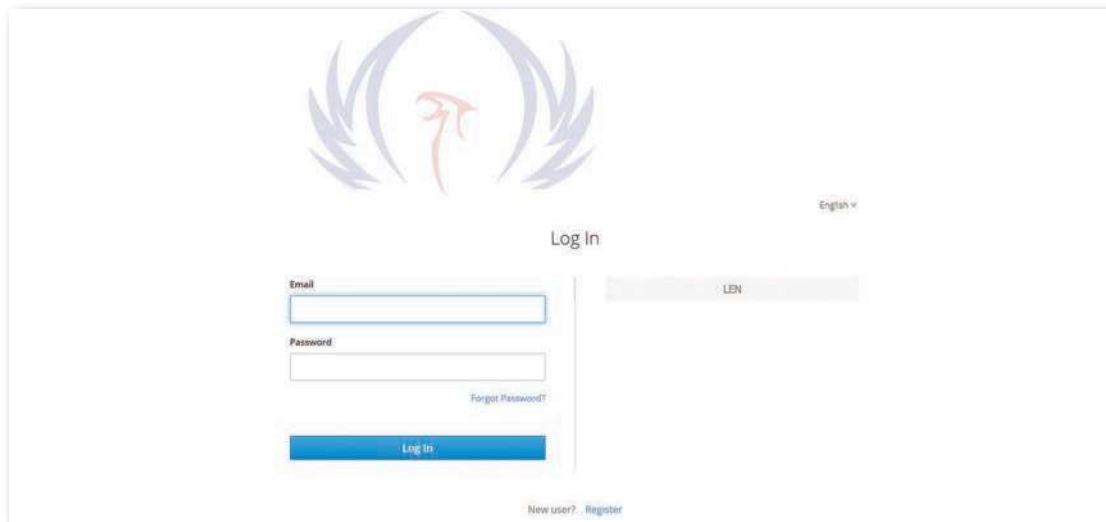


System Access & User Interface

System Access

To access the NICS application, you must have a NICS account with a username and a password, which is obtained when you register and after the NICS administrator for your organization has approved your application online.

Once authorized, you can log in by providing your username and password in the appropriate areas. You can also request that your NICS password be sent to the email address you provided during registration by clicking on the Forgot Password link.



English v

Log In

Email

Password

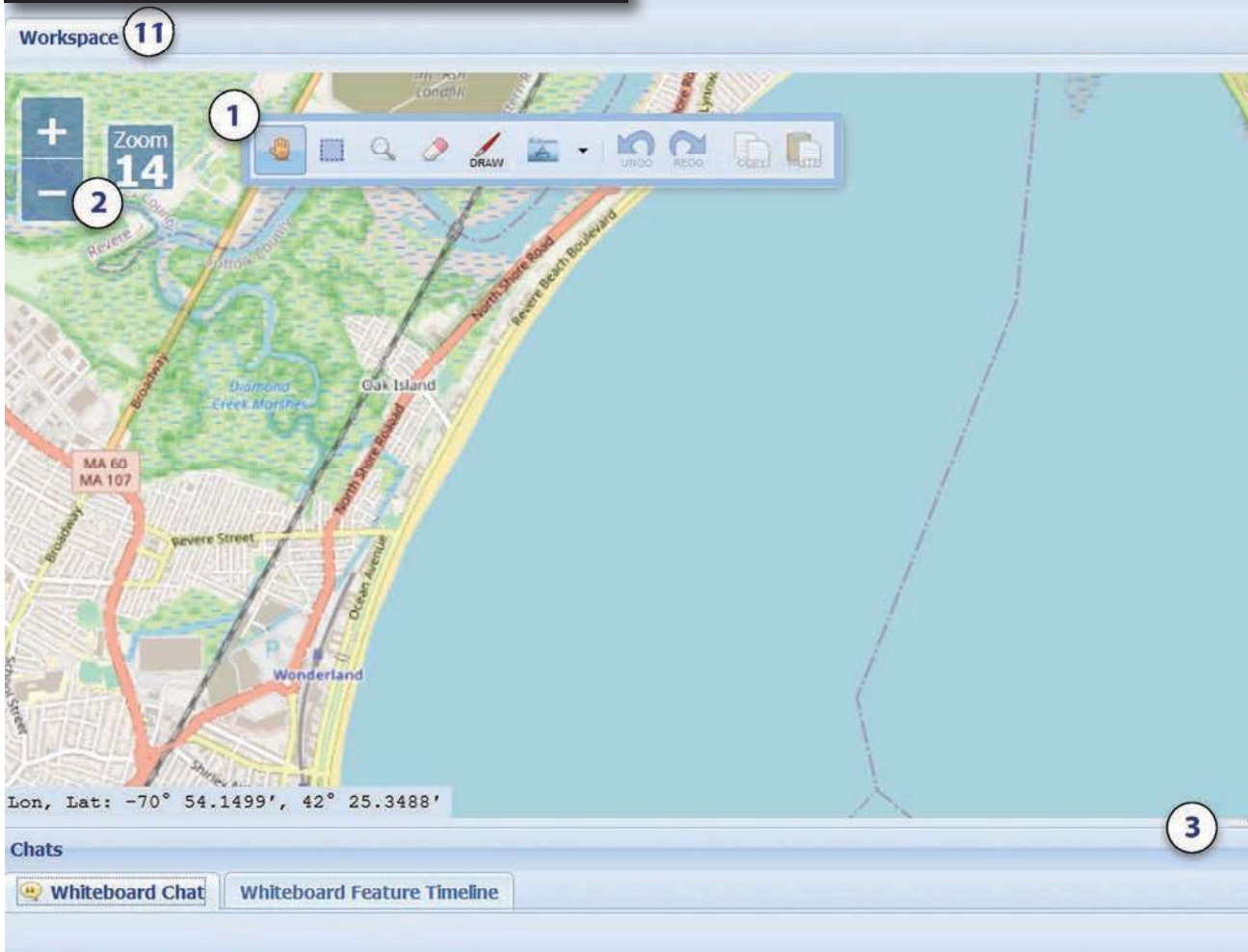
Forgot Password?

Log In

New user? Register

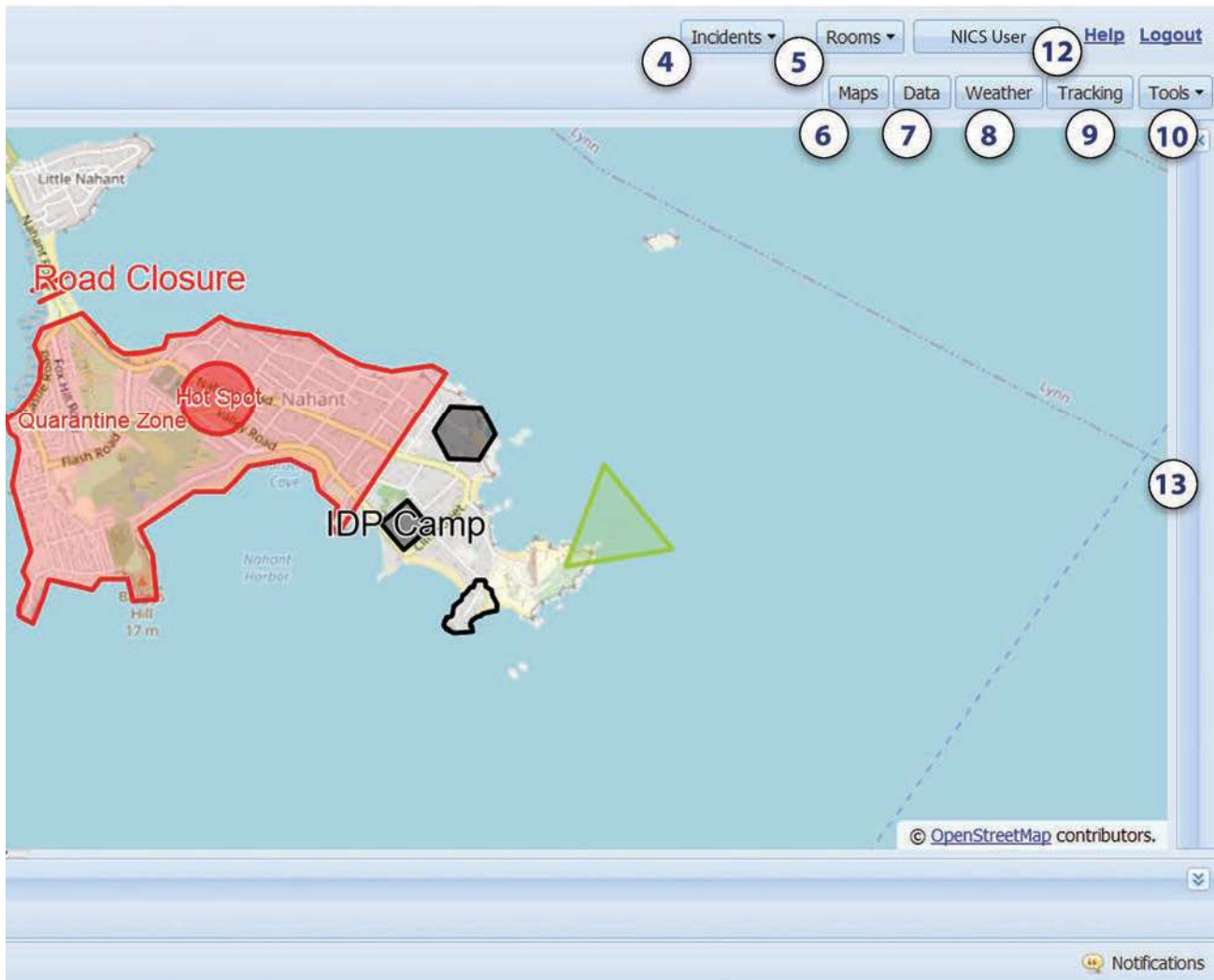


User Interface



1. Main toolbar: Drawing and map marking tools. (See drawing in the map section)
2. Map zoom level and zoom in and out buttons: You can use the plus or minus buttons to zoom in or out of the map. You can also use the scroll wheel on the mouse to achieve the same result.
3. Clicking here opens the bottom panel where the chat, timeline, and notification features can be found.
4. Incidents button: This button is where you can create an incident or select an incident that has already been created.
5. The Rooms button: Where you can create working rooms or join a room.
6. Maps button: This button gives the user multiple map option. Open Street, Bing Maps, US Topo Maps, and FAA Aeronautical Maps.
7. The Data button: Store and manage data layers uploaded by GIS users.

Section 1 System Access & User Interface



8. Weather button: This in an organizational tool used to organize weather data layers.
9. Tracking button: Allows you to track individuals, data points, and equipment and plot them to a map layer.
10. The Tools button: Allows you to print the map, export a room, view multiple incidents, modify room permissions, and access administration info.
11. Work Space: Represents private user room where work is persisted across sessions and not visible to other users.
12. User Information: Contact info is located here. You can also update your account information.
13. Clicking here opens the side panel.



Navigating the Map

NICS provides a variety of map tools for use in annotating your maps for your situational awareness. Primary map navigation is controlled using the zoom controls on the left side of the map region. Alternatively, the map tool bar contains zoom options as well as additional map navigation and annotation features. The various options are summarized in the following table.

Function	Tool	Description
Zoom		Click + to zoom in Click - to zoom out Zoom number indicates the current zoom level The higher the number, the more you are zoomed in
		Click and then draw a rectangular area on the map to zoom into that selected area
	Mouse Wheel	Scroll up to zoom in on your mouse location Scroll down to zoom out on your mouse location
Pan (Navigation)		Also known as the Hand tool Click the pan icon, then click and drag the map to the desired area
Select Box		Click and then draw a box around a set of features you want to move or copy
Eraser		Click and then select one or more features to remove the selected features
Draw		Click to display drawing tools
Apps		Click to access the Census, Weather, Geocode Location, and Share Workspace applications
Undo		Click to undo the last action you performed on the map
Redo		Click to redo the last action you performed on the map
Copy		Select a feature or set of features, then click to make a copy on the clipboard
Paste		Click to insert map items you copied to the clipboard