

SECTION 9



7.0.7 Updates

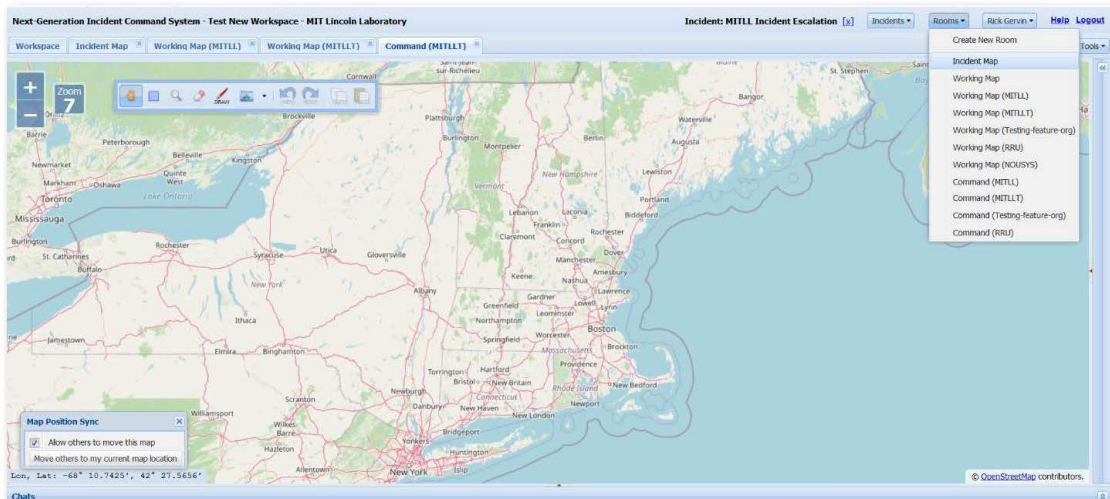


Assigning Organizations to Incident Types:

Super Users can register an organization by selecting the tools button in the upper right hand side of the application window. This will open a popup menu.

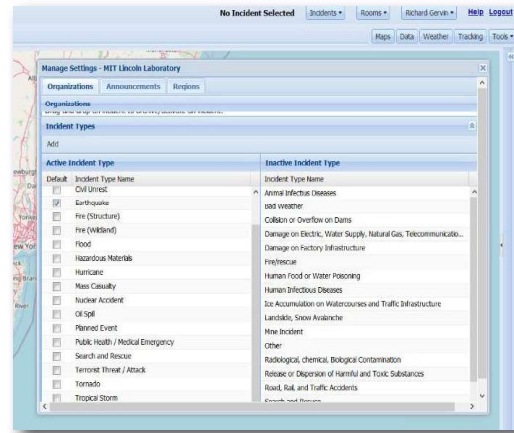
1. Select the Administration button. This will open the admin panel and will list all the registered organizations. To begin registering a new organization, scroll down to the Details section.

2. Fill out the organization's information. When you get to Default Lat/Long, select the locate button on at the top of the organization Details section, then select a point on the map where your organization is located (this will automatically add the coordinates for you).
3. Once you have filled out all of your organization's information, select one of the options to the right. This indicates what type of organization you are.
4. Scroll down to the Active Incident Type section and select the incident types your organization responds to (you can select more than one). If the incident has already been created, scroll back up to the Organization section and click



the submit button. If the incident has not already been created submit the organization, then create the incident, then apply the incident type to the organization

By registering with an incident type, your organization will automatically have their own set of rooms generated when the incident type matches the Organization's incident type.



NOTE: There is a template property you can configure in the incorg-consumer's property file to customize how the rooms are named, however there may be some character limitations.

- Command room, denoted by the Organization's prefix in parenthesis, e.g., "Command (MITLL)"
 - The Command room is restricted to the Organization shown in parenthesis
- Working Map, denoted by the Organization's prefix in parenthesis, e.g., "Working Map (MITLL)"
 - The Working Map room can be viewed by all for collaboration
- There still remains a single Incident Map room per Incident

Parents dynamically inherit access to the Incidents and Collaboration Rooms of their children. So an Organization's parent organization is also given permission to view the Incident.



Incident Escalation:

An incident can be escalated from the child organization to that organization's parent organization. When an incident is escalated, new rooms are created that both the parent and child organization have permission to access.

- These escalated rooms are denoted the following way:
 - Working Map (Parent Org Prefix, Child Org Prefix)
 - Command (Parent Org Prefix, Child Org Prefix)
- These rooms behave in the same way as the ones created for the Child Org via Incident Type registration

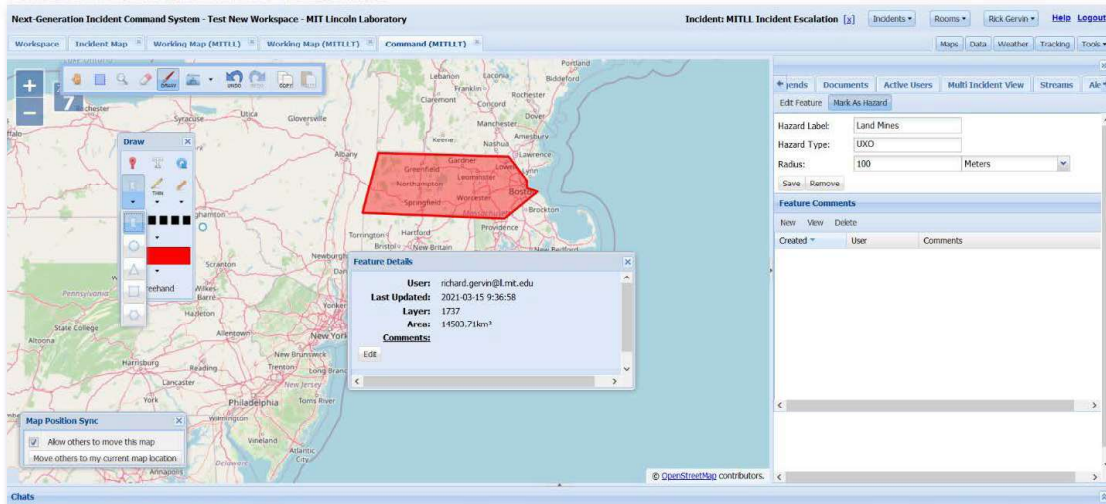
AOI/Hazard:

Area of Interest/Hazard Areas can be identified on the map by the following steps:

1. Select your drawing tool (whether a polygon, circle, or square).
2. Select the area you wish to mark as and AOI/Hazard.
3. Open the side panel by selecting the small arrows on the right side of the application window.
4. Scroll over to the Feature Details tab in the tab menu.
5. Select the feature using the hand tool.
6. Select the Mark as Hazard button at the top of the side panel.
7. Label the AOI/Hazard (e.g., Land mines).
8. Add a Hazard Type (e.g., UXO).
9. Add a standoff distance/radius. This is the distance from the hazard at which you want the responders in the field to be notified that there is a hazard in

the area. This can be measured in meters or kilometers by selecting from the dropdown menu.

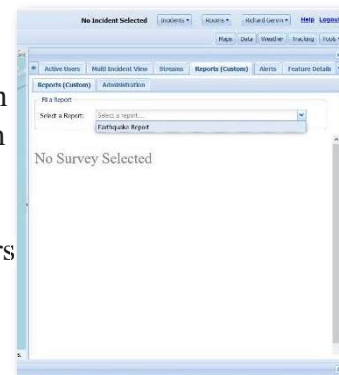
10. Select the save button.

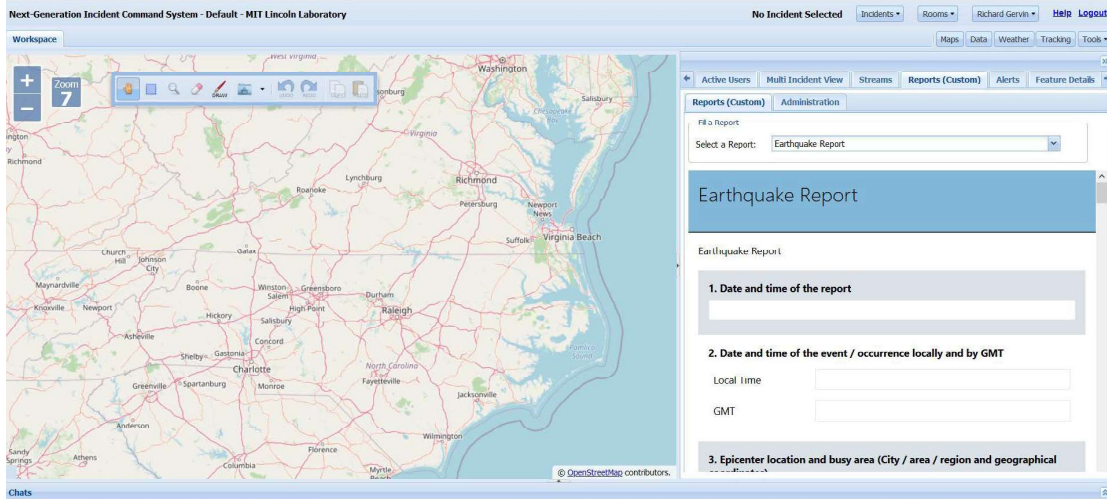


This feature will appear on the web application as well as mobile devices and will show the standoff area to the users in the field. If a responder enters the standoff area or the AOI/Hazard area, they will receive an alert via the mobile app. For more information on the AOI/Hazard mobile feature, see the mobile section of the NICS user manual.

Custom Reports with Incident Type Association:

NICS Users can create custom reports by going to www.surveyjs.io/creator, where you can use their drag and drop method of creating custom forms. As a super user, you can save the JSON representing the form, and associate it with an incident type. When you join an Incident, the Reports (Custom) tab will automatically be populated with all associated reports in the reports list dropdown menu. Users can then fill in the report.





Note: These reports act like the ROC, where you create an initial one, and then you can only create edits of past reports. Each version is saved.

Export KMZ:

There have been a few improvements to exporting KML/KMZ.

If the Collaboration Room you are exporting contains Markers, exporting will now package up those markers into a KMZ file that contains both the KML and the Marker files, so that the KMZ can be used stand-alone in third-party viewers, without the need to use network links to files on a web server.

Another addition to KMZ files is that now all exported drawings are written to the KML file, so that when they are loaded in a supported viewer, like Google Earth, the viewer will be able to pan and zoom in on the features.

If there are no markers in the Room, you will receive just the usual KML file.





*This project
is supported by:*

The NATO Science for Peace
and Security Programme



**Homeland
Security**

Science and Technology

NIMS



ND-T002 05-2020